



Addressable Module Six Relay Outputs

Product Overview:

The **CR-6 Six Relay Control Module** comprises six unsupervised voltage-free, change-over relays. Each relay module is individually controlled from the Fire Alarm Panel.

The base address is set from 01 to 94, the remaining relays being automatically assigned the next five addresses. To optimise Address use, the three highest addresses may be disabled, if not required.

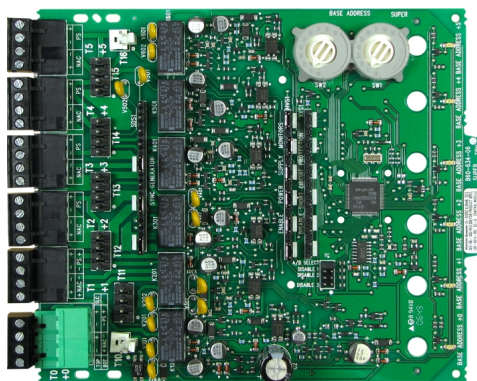
The **SC-6 Six Supervised Control Module** provides supervised monitoring of wiring to load devices that require an external power supply or amplifier to operate, such as horns, strobes, speakers or bells. When activated, the SC-6 disconnects the supervision and connects the external 'supply' across the load device(s).

The base address is set from 01 to 94, the remaining relays being automatically assigned the next five addresses. To optimise address use, the three highest addresses may be disabled, if not required.

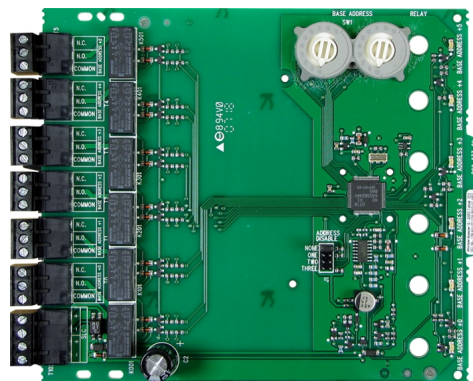
Independent terminals on each relay module allow for separate external supplies to be connected to each relay circuit. A supply may be common to one or more relay circuits using jumpers.

Optional power supply monitoring and short circuit protection are available:

- » **Power Supply Monitoring** is enabled if Short Circuit Protection is required. Disable for Audio applications.
- » **Short Circuit Protection** is disabled by default. When enabled, prevents the relay activating if a short circuit exists on a monitored circuit. Disable for Audio applications.



SC-6



CR-6

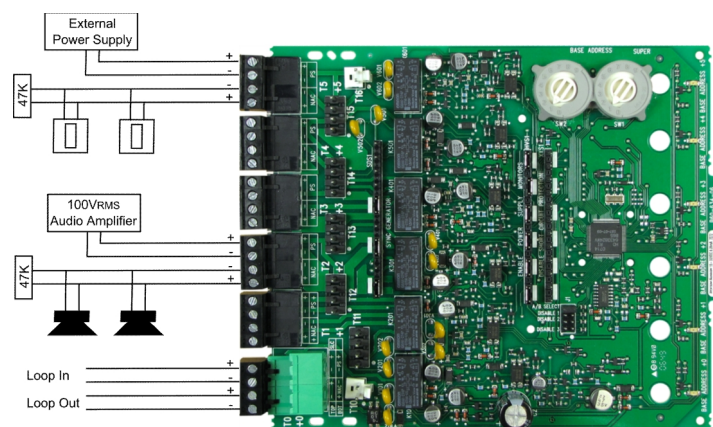
Features:

- » Robust microprocessor based design
- » Removable plug in terminals for quick and simple installation
- » Connectors accept 0.8mm² to 3.3mm² cable
- » 6 individual LED indicators, one per address
- » Up to 3 unused addresses may be disabled
- » Analogue addressable communications
- » Stable communication technique with noise immunity
- » Rotary decade address switches
- » Mounting Hardware included
- » Multi-mount chassis available for up to 4 multi-modules

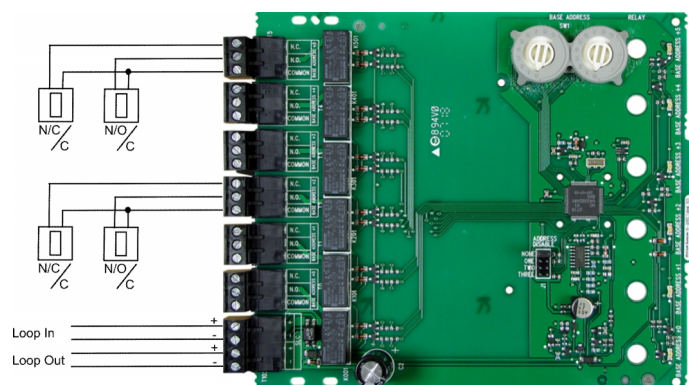
Specifications:

» Dimensions	173 x 147 x 31 (W x H x D mm) – Chassis Mount
» Wiring/Connection	0.8 to 3.3 mm ² , plug-in connectors
» Operating Temperature Range	-10°C to 49°C
» Relative Humidity	10% to 85% RH, Non-Condensing
» Voltage Range	15 to 32 VDC
» CR-6 Standby Current @ 24 VDC	1.45mA - maximum
» SC-6 Standby Current @ 24 VDC	2.25mA - maximum
» CR-6 Alarm Current	32mA - assumes all 6 relays activated
» SC-6 Alarm Current	35mA - assumes all 6 relays activated
» Relay Contact Rating	3A @ 30 VDC

Connection Diagram:



Typical Connections for an SC-6 module



Typical Connections for a CR-6 Module

Ordering Information:

Product Code	Description
CR-6	Addressable Module Six Relay Outputs
SC-6	Addressable Module Six Supervised Outputs
BKPI663CH-4	CH-4, 4 way chassis for 4 Multi AA Modules