



FireMap[®] Graphics

Fire Graphics Display System

• Melbourne

Unit B2
2A Westall Rd
Springvale
VIC 3171
Tel (03) 9562 7577
Fax (03) 9562 8044
sales.vic@pertronic.com.au

• Sydney

Unit 19
287 Victoria Rd
Rydalmere
NSW 2116
Tel (02) 9638 7655
Fax (02) 9638 7688
sales.nsw@pertronic.com.au

• Brisbane

Unit 3
23 Anthony St
West End
QLD 4101
Tel (07) 3255 2222
Fax (07) 3255 1122
sales.qld@pertronic.com.au

• Adelaide

65 Manton Street
Hindmarsh
SA 5007
Tel (08) 8340 9533
Fax (08) 8340 9544
sales.sa@pertronic.com.au

www.pertronic.com.au

Product Overview:

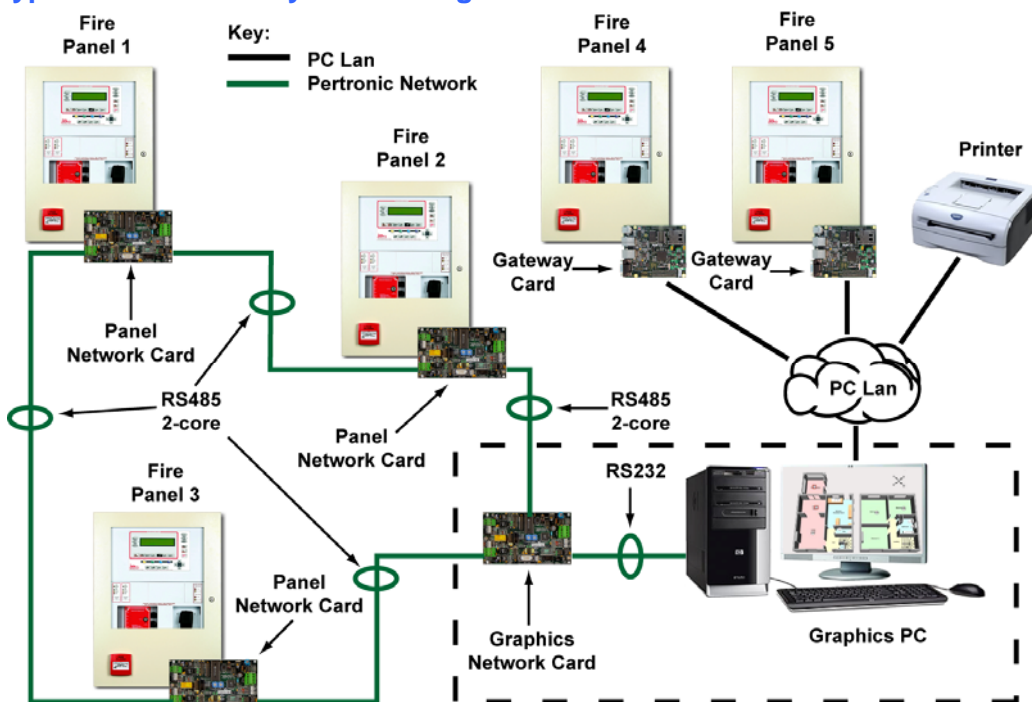
The **Pertronic FireMap[®] Graphics Display System** has been designed with 'ease of use' as a paramount objective. Users are assigned security levels and passwords by the system manager to allow access to those features they need.

The system allows navigation via the hierarchical map navigation view which is always visible. In the event of an alarm, the relevant map is automatically shown, indicating the position of the device in alarm, along with the event details.




Features:

- Accepts single or multiple individual or networked Pertronic panel connections
- Connection via direct RS232, or Ethernet (LAN)
- Gateway Interface option for individual panels (RS232–LAN conversion)
- Commercial RS232–LAN converter option for network interfaces
- Imports F100A and F120A panel configuration text files for device data and location details
- Allows the user to carry out all map editing functions, including placement or movement of devices, using simple '**drag and drop**' functionality
- Simple synchronization of panel configuration and graphics database
- Visibility of devices not yet placed onto maps
- Displays precise positioning of individual addressable devices within maps
- Colour coded display of each device's current status
- Utilizes jpg or bmp format files for map creation
- User creation of zone boundaries
- Current view print option at all times
- Overall system status indication by panel
- Configurable 'Home' view page
- Different distinctive sounds for event types
- User 'note' leaving function for other users
- Allows individual device or zone isolation and reset from alarm
- Panel/s can be individually directly controlled and interrogated from the PC
- Multiple user access with security login

Typical Multi-Panel System Configuration:



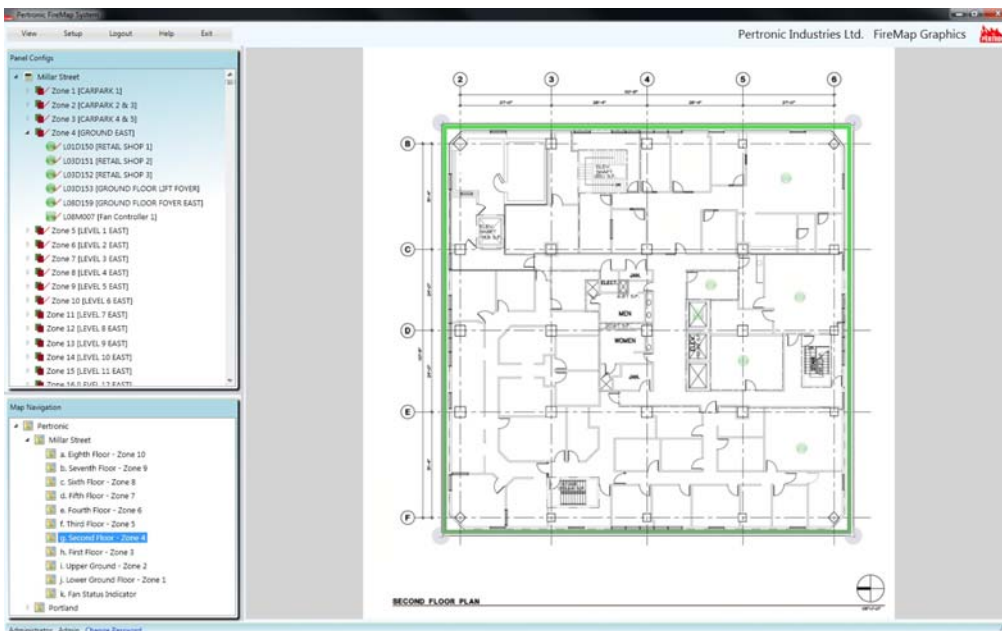
Minimum PC Specifications:

-  3GHz CPU, 2GB RAM, 80GB HDD, 1 x RS232, 2 x USB 2.0, DVD RW
-  Windows XP Professional SP3, Windows 7
-  TFT Screen 20" minimum, 1680 x 1050 (or higher) WSXGA (aspect ratio 1.6:1)

FireMap® Graphics System Screen Examples:



Monitoring Mode



Configuration Mode

Ordering Information:

Description

- Network Card for Graphic Interface
- Network Card - F100A/F120A Panels/LED Mimics
- Network Gateway Interface
- FireMap®** Graphics Display System software

Part Number

- NETCD-NCU
- NETCARD
- NETGATE
- FIREMAP

PERTRONIC INDUSTRIES PTY LTD

Melbourne

Unit B2
2A Westall Rd
Springvale VIC 3171
Telephone: (03) 9562 7577
Fax: (03) 9562 8044
sales.vic@pertronic.com.au

Sydney

Unit 19
287 Victoria Rd
Rydalmere NSW 2116
Telephone: (02) 9638 7655
Fax: (02) 9638 7688
sales.nsw@pertronic.com.au

Brisbane

Unit 3
23 Anthony Street
West End Qld 4101
Telephone: (07) 3255 2222
Fax: (07) 3255 1122
sales.qld@pertronic.com.au

Adelaide

65 Manton Street
Hindmarsh
SA 5007
Telephone: (08) 8340 9533
Fax: (08) 8340 9544
sales.sa@pertronic.com.au